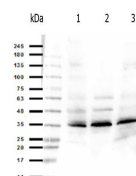


Product Datasheet

ORAI1 (RABBIT) Antibody GRP1619

Species/Host	Rabbit
Reactivity	Human
Conjugation	Unconjugated
Tested Applications	WB
Form/Appearance	0.01 M Sodium Phosphate, 0.15 M Sodium Chloride, pH 7.2
Concentration	45 mg/mL
Note	For research use only.
Isotype	IgG
Clonality	Polyclonal
Source	This whole rabbit serum was prepared by repeated immunizations with a recombinant fusion protein.
Uniprot ID	Q96D31
Dilution Range	Western Blot: 1:1000
Application Notes	Anti-ORAI-1 has been tested for use in western blotting. Specific conditions for reactivity should be optimized by the end user. Expect bands approximately 32.7 kDa by western blotting in the appropriate cell lysate or extract.



Western blot of
Anti-ORAI-1
Antibody