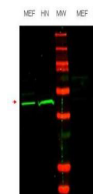


## Product Datasheet

### Oct-4 (RABBIT) Antibody GRP3635

|                            |                                                                                                                                                                                              |
|----------------------------|----------------------------------------------------------------------------------------------------------------------------------------------------------------------------------------------|
| <b>Description</b>         | Anti-Oct-4 (RABBIT) Antibody                                                                                                                                                                 |
| <b>Species/Host</b>        | Rabbit                                                                                                                                                                                       |
| <b>Reactivity</b>          | Human, Mouse                                                                                                                                                                                 |
| <b>Conjugation</b>         | Unconjugated                                                                                                                                                                                 |
| <b>Tested Applications</b> | ELISA, IF, IP, WB                                                                                                                                                                            |
| <b>Form/Appearance</b>     | 0.02 M Potassium Phosphate, 0.15 M Sodium Chloride, pH 7.2                                                                                                                                   |
| <b>Concentration</b>       | 0.59 mg/mL                                                                                                                                                                                   |
| <b>Note</b>                | For research use only.                                                                                                                                                                       |
| <b>Isotype</b>             | IgG                                                                                                                                                                                          |
| <b>Clonality</b>           | Polyclonal                                                                                                                                                                                   |
| <b>Source</b>              | This affinity purified antibody was prepared from whole rabbit serum produced by repeated immunizations with a synthetic peptide corresponding to an internal region of human Oct-4 protein. |
| <b>Uniprot ID</b>          | <b>Q01860</b>                                                                                                                                                                                |
| <b>Entrez</b>              | <a href="https://www.ncbi.nlm.nih.gov/gene//5460">https://www.ncbi.nlm.nih.gov/gene//5460</a>                                                                                                |
| <b>Dilution Range</b>      | ELISA: 1:350,000, IF Microscopy: User Optimized, Immunoprecipitation: User Optimized, Western Blot: 1:1,000 - 1:1,500                                                                        |
| <b>Application Notes</b>   | This affinity purified antibody has been tested for use in ELISA and western blotting.                                                                                                       |



Anti-Oct4 Antibody -  
Western  
Blot