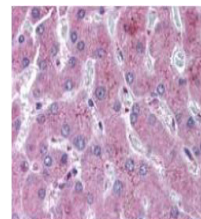


## Product Datasheet

### NOTCH 2 (Cleaved N terminal) (Human specific) (RABBIT) Antibody GRP1546

Species/Host	Rabbit
Reactivity	Human
Conjugation	Unconjugated
Tested Applications	ELISA, IHC-P, WB
Form/Appearance	0.02 M Potassium Phosphate, 0.15 M Sodium Chloride, pH 7.2
Concentration	75 mg/ml
Note	For research use only.
Isotype	Antiserum
Clonality	Polyclonal
Source	This whole rabbit serum was prepared by repeated immunizations with a synthetic peptide corresponding to amino acid residues of human Notch 2 located near the N-terminal sequence of the cleaved N intracellular domain (NICD).
Uniprot ID	<b>Q04721</b>
Entrez	<a href="https://www.ncbi.nlm.nih.gov/gene/4853">https://www.ncbi.nlm.nih.gov/gene/4853</a>
Dilution Range	ELISA: 1:30,000 to 1:90,000, Immunohistochemistry: 1:500, Western Blot: 1:400 - 1:2,000



Anti-NOTCH 2 Antibody -  
Immunohistochemistry