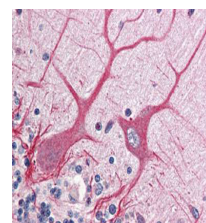


## Product Datasheet

### NOTCH 1 (intra) (RABBIT) Antibody GRP1541

<b>Species/Host</b>	Rabbit
<b>Reactivity</b>	Human
<b>Conjugation</b>	Unconjugated
<b>Tested Applications</b>	ELISA, IHC-P, WB
<b>Form/Appearance</b>	0.02 M Potassium Phosphate, 0.15 M Sodium Chloride, pH 7.2
<b>Concentration</b>	75 mg/mL
<b>Note</b>	For research use only.
<b>Isotype</b>	Antiserum
<b>Clonality</b>	Polyclonal
<b>Purity</b>	Notch1 antibody is directed against human NOTCH 1. No reaction is detected against NOTCH 2. No reactivity was observed against Mouse Notch. Other species have not been tested.
<b>Source</b>	Anti-Notch antibody was prepared by repeated immunizations with a synthetic peptide corresponding to an internal region near amino acid 2480-2510 of human Notch 1. A residue of cysteine was added to the amino terminal end to facilitate coupling.
<b>Uniprot ID</b>	<b>P46531</b>
<b>Entrez</b>	<a href="https://www.ncbi.nlm.nih.gov/gene//4851">https://www.ncbi.nlm.nih.gov/gene//4851</a>
<b>Dilution Range</b>	ELISA: 1:20,000 - 1:100,000, Immunochemistry: 1:1,000 - 1:5,000, Western Blot: 1:2,000 - 1:10,000
<b>Application Notes</b>	Anti-Notch-1 has been tested in IHC and ELISA. This antibody is useful in western blot. Specific conditions for reactivity should be optimized by the end user.



Anti-NOTCH 1 Antibody -  
Immunohistochemistry