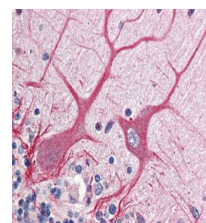


Product Datasheet

NOTCH 1 (intra) (RABBIT) Antibody GRP1541

Species/Host	Rabbit
Reactivity	Human
Conjugation	Unconjugated
Tested Applications	ELISA, IHC-P, WB
Form/Appearance	0.02 M Potassium Phosphate, 0.15 M Sodium Chloride, pH 7.2
Concentration	75 mg/mL
Note	For research use only.
Isotype	Antiserum
Clonality	Polyclonal
Purity	Notch1 antibody is directed against human NOTCH 1. No reaction is detected against NOTCH 2. No reactivity was observed against Mouse Notch. Other species have not been tested.
Source	Anti-Notch antibody was prepared by repeated immunizations with a synthetic peptide corresponding to an internal region near amino acid 2480-2510 of human Notch 1. A residue of cysteine was added to the amino terminal end to facilitate coupling.
Uniprot ID	P46531
Entrez	https://www.ncbi.nlm.nih.gov/gene//4851
Dilution Range	ELISA: 1:20,000 - 1:100,000, Immunochemistry: 1:1,000 - 1:5,000, Western Blot: 1:2,000 - 1:10,000
Application Notes	Anti-Notch-1 has been tested in IHC and ELISA. This antibody is useful in western blot. Specific conditions for reactivity should be optimized by the end user.



Anti-NOTCH 1 Antibody -
Immunohistochemistry