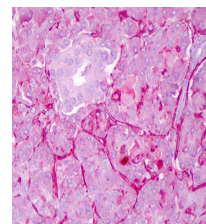


## Product Datasheet

### NOTCH 1 (Cleaved N terminal) (Human specific) (RABBIT) Antibody GRP1543

Species/Host	Rabbit
Reactivity	Human, Mouse
Conjugation	Unconjugated
Tested Applications	ELISA, IHC-P, WB
Form/Appearance	0.02 M Potassium Phosphate, 0.15 M Sodium Chloride, pH 7.2
Concentration	90 mg/mL
Note	For research use only.
Isotype	Antiserum
Clonality	Polyclonal
Source	This whole rabbit serum was prepared by repeated immunizations with a synthetic peptide corresponding to amino acid residues of human Notch 1 located near the N-terminal sequence of the cleaved N intracellular domain (NICD).
Uniprot ID	<b>P46531</b>
Entrez	<a href="https://www.ncbi.nlm.nih.gov/gene//4851">https://www.ncbi.nlm.nih.gov/gene//4851</a>
Dilution Range	ELISA: 1:20,000 - 1:60,000, Immunochemistry: 1:200, Western Blot: 1:500- 1:2,000

**Application Notes** Anti-Notch 1 is reactive with Notch 1 by western blotting, Immunohistochemistry (IHC) and ELISA. An 80 kDa band corresponding to Notch 1 was observed at a 1:500 dilution. Specific conditions for reactivity should be optimized by the end user.



Immunohistochemistry-  
anti-Notch1 antibody