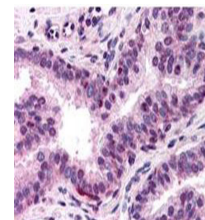


## Product Datasheet

### NF-Y (A subunit) (RABBIT) Antibody GRP1492

<b>Species/Host</b>	Rabbit
<b>Reactivity</b>	Human
<b>Conjugation</b>	Unconjugated
<b>Tested Applications</b>	ELISA, IHC-P, SDS-PAGE, WB
<b>Concentration</b>	90 mg/ml
<b>Note</b>	For research use only.
<b>Isotype</b>	Antiserum
<b>Clonality</b>	Polyclonal
<b>Purity</b>	Anti-NF-Y (A subunit) Antibody was prepared from monospecific antiserum by delipidation and defibrination.
<b>Source</b>	NF-Y (A subunit specific) peptide corresponding to a region near the N-terminus of the human protein conjugated to Keyhole Limpet Hemocyanin (KLH).
<b>Uniprot ID</b>	<b>P23511</b>
<b>Entrez</b>	<a href="https://www.ncbi.nlm.nih.gov/gene//4800">https://www.ncbi.nlm.nih.gov/gene//4800</a>
<b>Dilution Range</b>	ELISA: 1:20,000 - 1:100,000, Gel Shift: Use 2.0 µL, Immunochemistry: 1:400, Western Blot: 1:2,000 - 1:10,000



Anti-NF-Y (A Subunit)  
Antibody  
- Immunohistochemistry