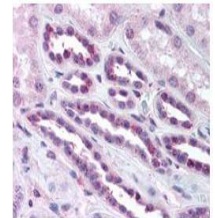


## Product Datasheet

### NFKB p65 (Rel A) pS276 (RABBIT) Antibody GRP1531

<b>Species/Host</b>	Rabbit
<b>Reactivity</b>	Human
<b>Conjugation</b>	Unconjugated
<b>Tested Applications</b>	ELISA, IHC-P, WB
<b>Concentration</b>	80 mg/mL
<b>Note</b>	For research use only.
<b>Isotype</b>	Antiserum
<b>Clonality</b>	Polyclonal
<b>Source</b>	NFkB p65 (Rel A) peptide corresponding to an internal region near phospho Serine 276 of the human protein conjugated to Keyhole Limpet Hemocyanin (KLH).
<b>Uniprot ID</b>	<a href="#">Q04206</a>
<b>Entrez</b>	<a href="https://www.ncbi.nlm.nih.gov/gene//5970">https://www.ncbi.nlm.nih.gov/gene//5970</a>
<b>Dilution Range</b>	ELISA: 1:10,000 - 1:30,000, Immunocytochemistry: 1:200-1:800, Western Blot: 1:1,000 - 1:5,000



Immunohistochemistry -  
Anti-NFKB p65 (Rel A)  
pS276  
Antibody