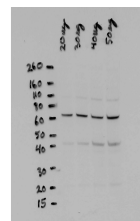


## Product Datasheet

### NFKB p65 (Rel A) N-TERMINAL SPECIFIC (RABBIT) Antibody GRP1646

Species/Host	Rabbit
Reactivity	Human
Conjugation	Unconjugated
Tested Applications	ELISA, WB
Concentration	82 mg/mL
Note	For research use only.
Isotype	Antiserum
Clonality	Polyclonal
Purity	NFkB p65 Antibody was prepared from monospecific antiserum by delipidation and defibrination. Anti-NFkB p65 (N-terminal specific) may react non-specifically with other proteins.
Source	Anti-NFkB p65 Antibody was produced by repeated immunizations with a synthetic NFkB p65 peptide corresponding to a region near the N-terminus of the human protein conjugated to Keyhole Limpet Hemocyanin (KLH).
Uniprot ID	<b>Q04206</b>
Entrez	<a href="https://www.ncbi.nlm.nih.gov/gene//5970">https://www.ncbi.nlm.nih.gov/gene//5970</a>
Dilution Range	ELISA: 1:5,000 - 1:25,000, Western Blot: 1:5000 - 1:10,000
Application Notes	Anti-NFkB p65 (N-terminal specific) is suitable for the detection by immunoblot of human NFkB p65 (N-terminal specific). Functionality in supershift assays has not been determined.



Western Blot - Rabbit anti-NFkBp65 Nterm