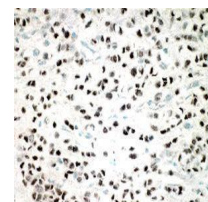


## Product Datasheet

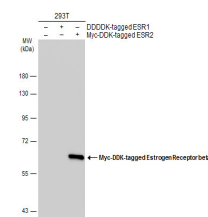
### Estrogen Receptor beta antibody [14C8] GRP87

<b>Description</b>	The human ER-beta is a newly discovered estrogen receptor initially cloned and characterized from testis. The size and structure of ER-beta is very similar to ER-alpha with the ligand and DNA binding domains being highly conserved, while the amino terminus which serves as their transactivation domain has diverged significantly. Similar in function to ER-alpha ER-beta binds to estrogen with a high affinity and regulates estrogen specific gene activation through direct interaction with estrogen response elements (ERE's).
<b>Species/Host</b>	Mouse
<b>Reactivity</b>	Human, Mouse, Monkey
<b>Conjugation</b>	Unconjugated
<b>Tested Applications</b>	ChIP, DOT, FACS, ICC, IF, IHC-P, WB
<b>Immunogen</b>	Amino acids 1-153 of human ER-beta expressed in E. coli.
<b>Form/Appearance</b>	Liquid: PBS
<b>Concentration</b>	1.23 mg/ml
<b>Storage</b>	Store as concentrated solution. Centrifuge briefly prior to opening vial. For short-term storage (1-2 weeks), store at 4°C. For long-term storage, aliquot and store at -20°C or below. Avoid multiple freeze-thaw cycles.
<b>Note</b>	For research use only.
<b>Isotype</b>	IgG2b
<b>Clonality</b>	Monoclonal
<b>Purity</b>	Protein G purified
<b>Clone ID</b>	14C8
<b>Uniprot ID</b>	<a href="#">Q92731</a>
<b>Entrez</b>	<a href="#">2100</a>



B. Infiltrating lobular carcinoma of the breast.

B. Infiltrating lobular carcinoma of the breast.



Non-transfected (â€“) and transfected (+) 293T whole cell extracts (30 µg) were separated by 7.5% SDS-PAGE, and the membrane was blotted with Estrogen Receptor beta antibody [14C8] (GRP539) diluted at 1:5000. The HRP-conjugated anti-mouse IgG antibody