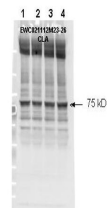


## Product Datasheet

### NF2 (Merlin) pS518 (RABBIT) Antibody GRP3398

<b>Description</b>	Anti-NF2 (Merlin) pS518 (RABBIT) Antibody
<b>Species/Host</b>	Rabbit
<b>Reactivity</b>	Mouse
<b>Conjugation</b>	Unconjugated
<b>Tested Applications</b>	ELISA, IHC-P, WB
<b>Form/Appearance</b>	0.02 M Potassium Phosphate, 0.15 M Sodium Chloride, pH 7.2
<b>Concentration</b>	1.0 mg/mL
<b>Note</b>	For research use only.
<b>Isotype</b>	IgG
<b>Clonality</b>	Polyclonal
<b>Source</b>	Human NF2 (Merlin) phospho-peptide corresponding to a region of the human protein surrounding S518 and conjugated to Keyhole Limpet Hemocyanin (KLH).
<b>Uniprot ID</b>	<b>P35240</b>
<b>Entrez</b>	<a href="https://www.ncbi.nlm.nih.gov/gene/4771">https://www.ncbi.nlm.nih.gov/gene/4771</a>
<b>Dilution Range</b>	ELISA: 1:1,200,000, Immunochemistry: User Optimized, Western Blot: 1:500- 1:2,000



Anti-Human NF2 (Merlin)  
pS518  
Antibody - Western Blot