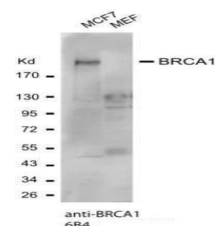


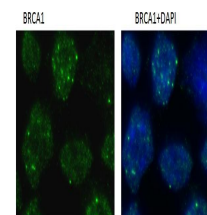
Product Datasheet

BRCA1 antibody [6B4] - ChIP grade GRP86

Description	BRCA1-6B4 recognizes full length BRCA1, a 220kDa nuclear phosphoprotein, and does not recognize the exon 11 splice variant. Mutations in this tumor suppressor gene greatly increase the risk of breast cancer. In a high proportion of breast and ovarian cancer cell lines, BRCA1 aberrantly mislocates to the cytoplasm. Recent studies suggest a role for BRCA1 in DNA double strand break repair because of its association with Rad51.
Species/Host	Mouse
Reactivity	Human, Mouse
Conjugation	Unconjugated
Tested Applications	ChIP, ICC, IF, IHC-P, IP, WB
Immunogen	BRCA1 protein fragment expressed in E. coli corresponding to amino acids 341-748.
Form/Appearance	Liquid: PBS
Concentration	2.75 mg/ml
Storage	Store as concentrated solution. Centrifuge briefly prior to opening. For short-term storage (1-2 weeks), store at 4°C. For long-term storage, aliquot and store at -20°C or below. Avoid multiple freeze-thaw cycles.
Note	For research use only.
Isotype	IgG1
Clonality	Monoclonal
Purity	Protein G purified
Clone ID	6B4
Uniprot ID	P38398
Entrez	672
Dilution Range	WB: 1:500-1:3000, ICC: 1:100-1:1000



BRCA1 antibody 6B4 (GRP538) was used for western blot assay at 1:1000 antibody dilution. western blot assay was performed using MCF7 (human) and MEF (mouse embryonic fibroblast) cell lysate separated in a 5-15% gradient gel. Observed molecular weight of BRC



BRCA1 antibody 6B4 (GRP538) was used for immunofluorescent staining of BRCA1 nuclear foci induced by ionizing radiation. IR-treated (2 hr /4 gray IR) U2OS cells were pre-extracted with CSK buffer on ice for 4 min before fixation with 4% PFA in room temperature.