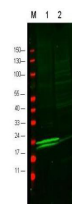


Product Datasheet

Myosin (RABBIT) Antibody GRP3549

Description	Anti-Myosin (RABBIT) Antibody
Species/Host	Rabbit
Reactivity	Mouse, Rat
Conjugation	Unconjugated
Tested Applications	ELISA, IHC-P, IP, WB
Form/Appearance	0.02 M Potassium Phosphate, 0.15 M Sodium Chloride, pH 7.2
Concentration	0.98mg/mL
Note	For research use only.
Isotype	IgG
Clonality	Polyclonal
Source	This affinity purified antibody was prepared from whole rabbit serum produced by repeated immunizations with a synthetic peptide corresponding to amino acids aa 10-35 of human myosin light chain protein.
Uniprot ID	J3QRS3
Entrez	https://www.ncbi.nlm.nih.gov/gene/10627
Dilution Range	ELISA: 1:10,000 - 1:70,000, Immunochemistry: User Optimized, Immunoprecipitation: 1:100, Western Blot: 1:500 - 1:2,000



Anti-Myosin Antibody -
Western
Blot