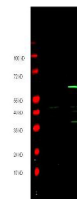


## Product Datasheet

### MYC EPI TOPE TAG (RABBIT) Antibody GRP3387

|                            |   |
|----------------------------|---|
| <b>Description</b>         | Anti-MYC EPI TOPE TAG (RABBIT) Antibody   |
| <b>Species/Host</b>        | Rabbit  |
| <b>Conjugation</b>         | Unconjugated  |
| <b>Tested Applications</b> | ELISA, IHC-P, WB  |
| <b>Form/Appearance</b>     | 0.02 M Potassium Phosphate, 0.15 M Sodium Chloride, pH 7.2  |
| <b>Concentration</b>       | 1.0 mg/ml   |
| <b>Note</b>                | For research use only.  |
| <b>Isotype</b>             | IgG   |
| <b>Clonality</b>           | Polyclonal  |
| <b>Source</b>              | This antibody was purified from whole rabbit serum prepared by repeated immunizations with Myc epitope tag peptide, E-Q-K-L-I-S-E-E-D-L, conjugated to KLH using maleimide. The sequence corresponds to amino acids 410-419 of human c-Myc. |
| <b>Dilution Range</b>      | ELISA: 1:135,000,Immunochemistry: User Optimized,Western Blot: 1:500 - 1:5,000  |



Anti-Myc epitope Tag  
Antibody  
- Western Blot