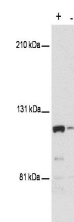


## Product Datasheet

### MTBP (Ascites) (MOUSE) Monoclonal Antibody GRP3249

<b>Description</b>	Anti-MTBP (Ascites) (MOUSE) Monoclonal Antibody
<b>Species/Host</b>	Mouse
<b>Reactivity</b>	Human
<b>Conjugation</b>	Unconjugated
<b>Tested Applications</b>	ELISA, WB
<b>Form/Appearance</b>	0.02 M Potassium Phosphate, 0.15 M Sodium Chloride, pH 7.2
<b>Concentration</b>	Neat
<b>Note</b>	For research use only.
<b>Isotype</b>	ASCITES
<b>Clonality</b>	Monoclonal
<b>Source</b>	This protein A purified monoclonal antibody was produced by repeated immunizations with a recombinant amino-terminal HIS <sub>6</sub> x-tagged polypeptide corresponding to amino acid residues 667-812 of human MTBP protein.
<b>Clone ID</b>	PHL-1
<b>Uniprot ID</b>	<b>Q96DY7</b>
<b>Entrez</b>	<a href="https://www.ncbi.nlm.nih.gov/gene//27085">https://www.ncbi.nlm.nih.gov/gene//27085</a>
<b>Dilution Range</b>	ELISA: 1:2,000 - 1:20,000, Western Blot: 1:200 - 1:2,000
<b>Application Notes</b>	This antibody has been tested for use in ELISA and western blot. Specific conditions for reactivity should be optimized by the end user. Expect a band ~ 110 kDa in size corresponding to MTBP by western blotting in the appropriate cell lysate or extract.



Anti-MTBP Antibody -  
Western  
Blot