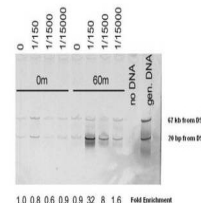


Product Datasheet

Mre11 (*S. cerevisiae*) (RABBIT) Antibody GRP3498

Description	Anti-Mre11 (<i>S. cerevisiae</i>) (RABBIT) Antibody
Species/Host	Rabbit
Reactivity	Fungi
Conjugation	Unconjugated
Tested Applications	ChIP, ELISA, WB
Form/Appearance	0.02 M Potassium Phosphate, 0.15 M Sodium Chloride, pH 7.2
Concentration	1.17 mg/mL
Note	For research use only.
Isotype	IgG
Clonality	Polyclonal
Source	This affinity purified antibody was prepared from whole rabbit serum produced by repeated immunizations with a synthetic peptide corresponding to an internal region near amino acids 575-600 of <i>Saccharomyces cerevisiae</i> (baker's yeast) Mre11 protein.
Uniprot ID	P32829
Entrez	https://www.ncbi.nlm.nih.gov/gene//4361
Dilution Range	ELISA: 1:10,000 - 1:50,000, ChIP: User Optimized, Western Blot: 1:500- 1:2,000
Application Notes	This affinity purified antibody has been tested for use in ELISA and by ChIP assay. Specific conditions for reactivity should be optimized by the end user.



Anti-Mre11 (*S. cerevisiae*)
Antibody - Chromatin
Immunoprecipitation
(ChIP)