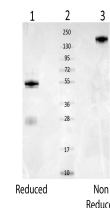


Product Datasheet

MOUSE SERUM ALBUMIN (RABBIT) Antibody GRP3361

Description	Anti-MOUSE SERUM ALBUMIN (RABBIT) Antibody
Species/Host	Rabbit
Reactivity	Mouse
Conjugation	Unconjugated
Tested Applications	ELISA, IHC-P, WB
Form/Appearance	0.02 M Potassium Phosphate, 0.15 M Sodium Chloride, pH 7.2
Concentration	1.0 mg/mL
Note	For research use only.
Isotype	IgG
Clonality	Polyclonal
Source	Anti-Mouse Serum Albumin Antibody was produced by repeated immunizations with mouse serum albumin.
Uniprot ID	P07724
Entrez	https://www.ncbi.nlm.nih.gov/gene//11657
Dilution Range	ELISA: 1:20,000 - 1:100,000, Immunochemistry: 1:500 - 1:2,500, Western Blot: 1:2,000 - 1:10,000
Application Notes	Anti-ALB antibody has been assayed against 1.0 µg of Mouse Serum Albumin in a standard ELISA using Peroxidase conjugated Affinity Purified Goat anti-Rabbit IgG [H&L] MX 122 and TMB as a substrate for 30 minutes at room temperature.



Rb-a-Mouse Serum
Albumin -
SDS-PAGE