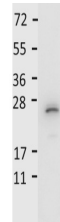


Product Datasheet

Mouse IL-27/p28 (RABBIT) Antibody GRP3072

Description	Anti-Mouse IL-27/p28 (RABBIT) Antibody
Species/Host	Rabbit
Reactivity	Mouse
Conjugation	Unconjugated
Tested Applications	ELISA, WB
Form/Appearance	0.02 M Potassium Phosphate, 0.15 M Sodium Chloride, pH 7.2
Concentration	1.0 mg/mL
Note	For research use only.
Isotype	IgG
Clonality	Polyclonal
Source	This purified antibody was prepared from whole rabbit serum produced by repeated immunizations with full length recombinant mouse IL27/p28 protein.
Uniprot ID	Q8K3I6
Entrez	https://www.ncbi.nlm.nih.gov/gene//246779
Dilution Range	ELISA: 1:1,000 - 1:5,000, Western Blot: 1:500 - 1:2,000



Anti-Mouse IL-27/p28
Antibody
- Western Blot