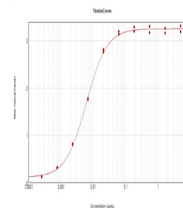


## Product Datasheet

### MOUSE IgM (mu chain) (RABBIT) Antibody GRP4829

<b>Description</b>	Anti-MOUSE IgM (mu chain) (RABBIT) Antibody
<b>Species/Host</b>	Rabbit
<b>Reactivity</b>	Mouse
<b>Conjugation</b>	Unconjugated
<b>Tested Applications</b>	ELISA, IHC-P, WB
<b>Form/Appearance</b>	0.02 M Potassium Phosphate, 0.15 M Sodium Chloride, pH 7.2
<b>Concentration</b>	2.1 mg/mL
<b>Note</b>	For research use only.
<b>Isotype</b>	IgG
<b>Clonality</b>	Polyclonal
<b>Source</b>	Mouse IgM whole molecule
<b>Dilution Range</b>	ELISA: 1:20,000 - 1:100,000, Immunochemistry: 1:500 - 1:2,500, Western Blot: 1:2,000 - 1:10,000
<b>Application Notes</b>	Anti-Mouse IgM mu heavy chain antibody is suitable for use in immunoelectrophoresis, western-blot, competitive western-blot, ELISA and competitive ELISA assays. Specific conditions for reactivity and signal detection should be optimized by the end user.



ELISA Results of Rabbit Anti-Mouse IgM Antibody