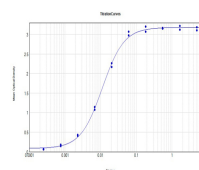


Product Datasheet

MOUSE IgG3 (Gamma 3 chain) (GOAT) Antibody Minimum Cross Reactivity to Bovine, Human, and Rabbit Serum Proteins GRP4674

Description	Anti-MOUSE IgG3 (Gamma 3 chain) (GOAT) Antibody Minimum Cross Reactivity to Bovine, Human, and Rabbit Serum Proteins
Species/Host	Goat
Reactivity	Mouse
Conjugation	Unconjugated
Tested Applications	ELISA, IHC-P, WB
Form/Appearance	0.02 M Potassium Phosphate, 0.15 M Sodium Chloride, pH 7.2
Concentration	1.0 mg/mL
Note	For research use only.
Isotype	IgG
Clonality	Polyclonal
Source	Mouse IgG3 heavy chain
Dilution Range	ELISA: 1:40,000 - 1:200,000, Immunochemistry: 1:2,000 - 1:10,000, Western Blot: 1:4,000 - 1:20,000
Application Notes	Anti-Mouse IgG3 secondary antibody is suitable for ELISA, Immunohistochemistry, western blotting as well as other anti IgG3 antibody based assays. Mouse IgG3 secondary antibody is available in a variety of formats.



ELISA Results of Goat Anti-Mouse IgG3 mx3 Antibody