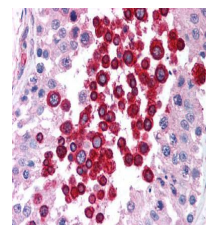


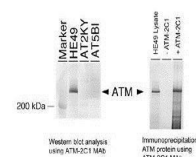
## Product Datasheet

### ATM antibody [2C1] GRP83

<b>Description</b>	The ATM antibody, clone 2C1, recognizes full-length ATM, a 370kDa nuclear phosphoprotein, which is involved in the autosomal recessive disease ataxia telangiectasia (AT). ATM belongs to a novel family of proteins associated with cell cycle regulation and response to DNA repair. The C-terminal region has extensive homology to the catalytic domains of phosphatidylinositol 3-kinases (PI3 kinases). Its usefulness to monitor altered ATM expression in cancer is under active investigation.
<b>Species/Host</b>	Mouse
<b>Reactivity</b>	Human, Mouse, Rat, Monkey
<b>Conjugation</b>	Unconjugated
<b>Tested Applications</b>	ChIP, ELISA, FACS, ICC, IF, IHC-P, IP, WB
<b>Immunogen</b>	Recombinant protein expressed in E. coli corresponding to amino acids 2577-3056.
<b>Form/Appearance</b>	Liquid: PBS
<b>Concentration</b>	1 mg/ml
<b>Storage</b>	Store as concentrated solution. Centrifuge briefly prior to opening vial. For short-term storage (1-2 weeks), store at 4°C. For long-term storage, aliquot and store at -20°C or below. Avoid multiple freeze-thaw cycles.
<b>Note</b>	For research use only.
<b>Isotype</b>	IgG1
<b>Clonality</b>	Monoclonal
<b>Purity</b>	Purified by antigen-affinity chromatography.
<b>Clone ID</b>	2C1
<b>Uniprot ID</b>	<a href="#">Q13315</a>
<b>Entrez</b>	<a href="#">472</a>



Human Testis (formalin-fixed, paraffin-embedded) stained with ATM antibody at 5 µg/ml followed by biotinylated anti-mouse IgG secondary antibody, alkaline phosphatase-streptavidin and chromogen.



Detection of human ATM protein using anti-ATM 2C1 monoclonal antibody (GRP535) by western blot or immunoprecipitation.