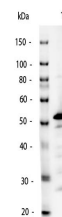


## Product Datasheet

# MOUSE IgG2a (Gamma 2a chain) (RABBIT) Antibody Alkaline Phosphatase Conjugated GRP4885

<b>Description</b>	Anti-MOUSE IgG2a (Gamma 2a chain) (RABBIT) Antibody Alkaline Phosphatase Conjugated
<b>Species/Host</b>	Rabbit
<b>Conjugation</b>	AP
<b>Tested Applications</b>	ELISA, IHC-P, WB
<b>Form/Appearance</b>	0.05 M Tris Chloride, 0.15M Sodium Chloride, 0.001M Magnesium Chloride, 0.0001M Zinc Chloride, 50% (v/v) Glycerol; pH 8.0
<b>Concentration</b>	1.0 mg/mL
<b>Storage</b>	Store vial at 4 °C before opening. DO NOT FREEZE. This product is stable at 4 °C as an undiluted liquid. Dilute only prior to immediate use. Freezing alkaline phosphatase conjugates will result in a substantial loss of enzymatic activity.
<b>Note</b>	For research use only.
<b>Isotype</b>	IgG
<b>Clonality</b>	Polyclonal
<b>Source</b>	Mouse IgG2a heavy chain
<b>Dilution Range</b>	ELISA: 1:2,000 - 1:10,000, Immunochemistry: 1:200 - 1:1,000, Western Blot: 1:500 - 1:2,500
<b>Application Notes</b>	This product has been assayed against 1.0 µg of Mouse IgG in a standard capture ELISA using pNPP p-nitrophenyl phosphate as a substrate for 30 minutes at room temperature. A working dilution of 1:1,000 to 1:5,000 is suggested for this product.



Mouse IgG2a Antibody Alkaline Phosphatase Conjugated - Western Blot