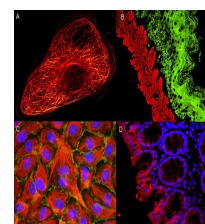


## Product Datasheet

# MOUSE IgG2a (Gamma 2a chain) (GOAT) Antibody ATTO 488 Conjugated (Min Cross Bv, Hu, and Rb Serum Proteins) GRP4756

<b>Description</b>	Anti-MOUSE IgG2a (Gamma 2a chain) (GOAT) Antibody ATTO 488 Conjugated (Min Cross Bv, Hu, and Rb Serum Proteins)
<b>Species/Host</b>	Goat
<b>Reactivity</b>	Mouse
<b>Conjugation</b>	ATTO-488
<b>Tested Applications</b>	FC, IF, IHC-P, WB
<b>Form/Appearance</b>	0.02 M Potassium Phosphate, 0.15 M Sodium Chloride, pH 7.2
<b>Concentration</b>	1.0 mg/mL
<b>Note</b>	For research use only.
<b>Isotype</b>	IgG
<b>Clonality</b>	Polyclonal
<b>Source</b>	Mouse IgG2a heavy chain
<b>Dilution Range</b>	FLISA: >1:20,000, Flow Cytometry: 1:500 - 1:2,500, Fluorochrome: 2.7, IF Microscopy: >1:5,000, Western Blot: 1:4,000 - 1:20,000



IF - MOUSE IgG2a  
Antibody ATTO  
488 Conjugated  
Pre-adsorbed