

## Product Datasheet

# MOUSE IgG1 (Gamma 1 chain) (RABBIT) Antibody Peroxidase Conjugated GRP4864

**Description** Anti-MOUSE IgG1 (Gamma 1 chain) (RABBIT) Antibody Peroxidase Conjugated

**Species/Host** Rabbit

**Conjugation** HRP

**Tested Applications** ELISA, IHC-P, WB

**Form/Appearance** 0.02 M Potassium Phosphate, 0.15 M Sodium Chloride, pH 7.2

**Concentration** 1.0 mg/mL

**Note** For research use only.

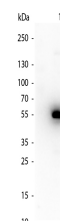
**Isotype** IgG

**Clonality** Polyclonal

**Source** Mouse IgG1 heavy chain

**Dilution Range** ELISA: 1:20,000 - 1:200,000, Immunochemistry: 1:500 - 1:2,500, Western Blot: 1:2,000 - 1:20,000

**Application Notes** Mouse IgG1 secondary antibody conjugated to HRP is available in a variety of formats. Anti Mouse IgG1 secondary antibody conjugate is suitable for ELISA, Immunohistochemistry western blotting as well as other anti IgG1 antibody based assays.



WB - Mouse IgG1  
Secondary  
Antibody Peroxidase  
Conjugated