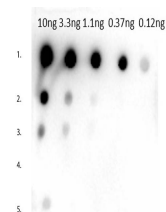


Product Datasheet

MOUSE IgG1 (Gamma 1 chain) (RABBIT) Antibody GRP4836

Description	Anti-MOUSE IgG1 (Gamma 1 chain) (RABBIT) Antibody
Species/Host	Rabbit
Reactivity	Mouse
Conjugation	Unconjugated
Tested Applications	ELISA, IHC-P, WB
Form/Appearance	0.02 M Potassium Phosphate, 0.15 M Sodium Chloride, pH 7.2
Concentration	1.0 mg/mL
Note	For research use only.
Isotype	IgG
Clonality	Polyclonal
Source	Mouse IgG1 heavy chain
Dilution Range	ELISA: 1:20,000 - 1:100,000, Immunochemistry: 1:1,000 - 1:5,000, Western Blot: 1:2,000 - 1:10,000

Application Notes Mouse IgG1 secondary antibody is available in a variety of formats. Anti Mouse IgG1 secondary antibody is suitable for ELISA, Immunohistochemistry western blotting as well as other anti IgG1 antibody based assays.



Dot Blot of Rabbit Anti-Mouse IgG1 Antibody.