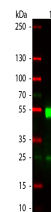


Product Datasheet

MOUSE IgG (H&L) (RABBIT) Antibody Rhodamine Conjugated GRP4802

Description	Anti-MOUSE IgG (H&L) (RABBIT) Antibody Rhodamine Conjugated
Species/Host	Rabbit
Conjugation	Rhodamine (TRITC)
Tested Applications	FC, IF, IHC-P
Form/Appearance	0.02 M Potassium Phosphate, 0.15 M Sodium Chloride, pH 7.2
Concentration	2.0 mg/mL
Note	For research use only.
Isotype	IgG
Clonality	Polyclonal
Source	Mouse IgG whole molecule
Dilution Range	FLISA: 1:10,000 - 1:50,000, Flow Cytometry: 1:500 - 1:2,500, Fluorochrome: 4.38, IF Microscopy: 1:1,000 - 1:5,000



WB - Mouse IgG (H&L)
Antibody
Rhodamine Conjugated