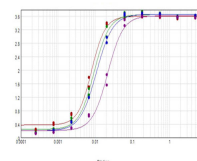


## Product Datasheet

# MOUSE IgG (H&L) (RABBIT) Antibody Biotin Conjugated (Min X Human Serum Proteins) GRP4906

<b>Description</b>	Anti-MOUSE IgG (H&L) (RABBIT) Antibody Biotin Conjugated (Min X Human Serum Proteins)
<b>Species/Host</b>	Rabbit
<b>Conjugation</b>	Biotin
<b>Tested Applications</b>	ELISA, IHC-P, WB
<b>Form/Appearance</b>	0.02 M Potassium Phosphate, 0.15 M Sodium Chloride, pH 7.2
<b>Concentration</b>	2.0 mg/mL
<b>Note</b>	For research use only.
<b>Isotype</b>	IgG
<b>Clonality</b>	Polyclonal
<b>Source</b>	Mouse IgG whole molecule
<b>Dilution Range</b>	ELISA: 1:20,000 - 1:100,000, Immunochemistry: 1:1,000 - 1:5,000, Western Blot: 1:2,000 - 1:10,000



ELISA results of purified  
Rabbit anti-Mouse IgG  
Biotin  
Conjugated Antibody Min  
X  
human serum