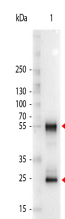


Product Datasheet

MOUSE IgG (H&L) (RABBIT) Antibody Alkaline Phosphatase Conjugated (Min X Human Serum Proteins) GRP4878

Description	Anti-MOUSE IgG (H&L) (RABBIT) Antibody Alkaline Phosphatase Conjugated (Min X Human Serum Proteins)
Species/Host	Rabbit
Conjugation	AP
Tested Applications	ELISA, IHC-P, WB
Form/Appearance	0.05 M Tris Chloride, 0.15M Sodium Chloride, 0.001M Magnesium Chloride, 0.0001M Zinc Chloride, 50% (v/v) Glycerol; pH 8.0
Concentration	1.0 mg/mL
Storage	Store vial at 4 °C before opening. DO NOT FREEZE. This product is stable at 4 °C as an undiluted liquid. Dilute only prior to immediate use. Freezing alkaline phosphatase conjugates will result in a substantial loss of enzymatic activity.
Note	For research use only.
Isotype	IgG
Clonality	Polyclonal
Source	Mouse IgG whole molecule
Dilution Range	ELISA: 1:9,800,Immunochemistry: 1:100 - 1:500,Western Blot: 1:500 - 1:2,000
Application Notes	Anti-Mouse IgG Alk Phos conjugate is suitable for immunoblotting (western or dot blot), ELISA, immunoelectron microscopy and immunohistochemistry as well as other antibody-based enzymatic assays requiring lot-to-lot consistency.



Mouse IgG (H&L) Antibody Alkaline Phosphatase Conjugated Pre-Adsorbed

Western Blot