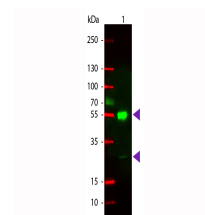


Product Datasheet

MOUSE IgG (H&L) (GOAT) Antibody Rhodamine Conjugated GRP4665

Description	Anti-MOUSE IgG (H&L) (GOAT) Antibody Rhodamine Conjugated
Species/Host	Goat
Reactivity	Mouse
Conjugation	Rhodamine (TRITC)
Tested Applications	FC, IF, IHC-P
Form/Appearance	0.02 M Potassium Phosphate, 0.15 M Sodium Chloride, pH 7.2
Concentration	1.0 mg/mL
Note	For research use only.
Isotype	IgG
Clonality	Polyclonal
Purity	This product was prepared from monospecific antiserum by immunoaffinity chromatography using Mouse IgG coupled to agarose beads. Assay by immunoelectrophoresis resulted in a single precipitin arc against anti-Goat Serum, Mouse IgG and Mouse Serum.
Source	Mouse IgG whole molecule
Dilution Range	FLISA: 1:10,000 - 1:50,000, Flow Cytometry: 1:500 - 1:2,500, Fluorochrome: 2.9, IF Microscopy: 1:1,000 - 1:5,000



WB - Mouse IgG (H&L) Antibody Rhodamine Conjugated