

Product Datasheet

MOUSE IgG (H&L) (GOAT) Antibody (Min X Human Serum Proteins) GRP4727

Description Anti-MOUSE IgG (H&L) (GOAT) Antibody (Min X Human Serum Proteins)

Species/Host Goat

Reactivity Mouse

Conjugation Unconjugated

Tested Applications ELISA, IHC-P, WB

Form/Appearance 0.02 M Potassium Phosphate, 0.15 M Sodium Chloride, pH 7.2

Concentration 8.6 mg/mL

Note For research use only.

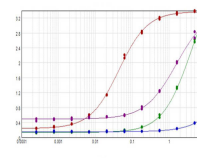
Isotype IgG

Clonality Polyclonal

Source Mouse IgG whole molecule

Dilution Range ELISA: 1:100,000 - 1:500,000, Immunochemistry: 1:5,000 - 1:25,000, Western Blot: 1:10,000 - 1:50,000

Application Notes Anti-Mouse IgG antibody is suitable for ELISA, western blot, and immunohistochemistry, as well as other assays requiring lot-to-lot consistency.



ELISA results of purified
Goat
anti-Mouse IgG Antibody
Min X
human serum