

Product Datasheet

MOUSE IgG (H&L) (GOAT) Antibody (Min X Bv Ch Gt GP Ham Hs Hu Rb Rt & Sh Serum Proteins) GRP4676

Description Anti-MOUSE IgG (H&L) (GOAT) Antibody (Min X Bv Ch Gt GP Ham Hs Hu Rb Rt & Sh Serum Proteins)

Species/Host Goat

Reactivity Mouse

Conjugation Unconjugated

Tested Applications ELISA, IHC-P, WB

Form/Appearance 0.02 M Potassium Phosphate, 0.15 M Sodium Chloride, pH 7.2

Concentration 1.1 mg/mL

Note For research use only.

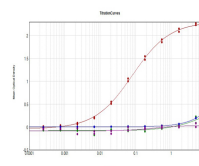
Isotype IgG

Clonality Polyclonal

Source Anti-Mouse IgG whole molecule was produced by repeated immunization with Mouse IgG whole molecule in goat.

Dilution Range ELISA: 1:180,000, Immunochemistry: 1:1,000 - 1:5,000, Western Blot: 1:2,000 - 1:20,000

Application Notes Anti-Mouse IgG whole molecule is suitable for use in immunoelectrophoresis, western-blot, competitive western-blot, ELISA and competitive ELISA assays. Specific conditions for reactivity and signal detection should be optimized by the end user.



ELISA Results of Goat Anti-Mouse IgG mx10 Antibody