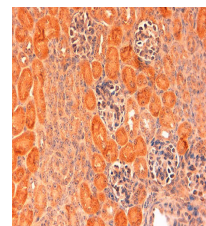


Product Datasheet

Mouse DELTA-1 (RABBIT) Antibody GRP3490

Description	Anti-Mouse DELTA-1 (RABBIT) Antibody
Species/Host	Rabbit
Reactivity	Mouse
Conjugation	Unconjugated
Tested Applications	ELISA, IHC-P, WB
Form/Appearance	0.02 M Potassium Phosphate, 0.15 M Sodium Chloride, pH 7.2
Concentration	1.1 mg/mL
Note	For research use only.
Isotype	IgG
Clonality	Polyclonal
Source	This affinity purified antibody was prepared from whole rabbit serum produced by repeated immunizations with a synthetic peptide corresponding to an internal region near amino acids 150-175 of Mouse DELTA-1. Swiss Prot accession Q61483.
Uniprot ID	Q61483
Entrez	https://www.ncbi.nlm.nih.gov/gene//13388
Dilution Range	ELISA: 1:3,000 - 1:12,000, Immunochemistry: 2ug/ml, Western Blot: 1:100 - 1:1,000

Application Notes Anti-DELTA-1 Antibody has been tested for use in ELISA against the immunizing peptide and in IHC. It is expected that anti-Delta-1 antibody will be reactive in western blot assays Reactivity in other immunoassays is unknown.



Anti mouse Delta 1 -
Immunohistochemistry