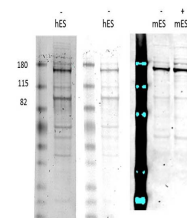


Product Datasheet

Morc3 (RABBIT) Antibody GRP1611

Species/Host	Rabbit
Reactivity	Human, Mouse
Conjugation	Unconjugated
Tested Applications	ELISA, WB
Form/Appearance	0.02 M Potassium Phosphate, 0.15 M Sodium Chloride, pH 7.2
Concentration	70 mg/mL
Note	For research use only.
Isotype	Antiserum
Clonality	Polyclonal
Source	Morc3 whole rabbit serum was prepared by repeated immunizations with a human Morc3 recombinant protein.
Uniprot ID	Q14149
Entrez	https://www.ncbi.nlm.nih.gov/gene//23515
Dilution Range	ELISA: 1:20,000-1:50,000, Western Blot: 1:1000-1:5000



Western Blot - anti-Morc3