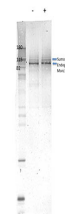


## Product Datasheet

### Morc3 (RABBIT) Antibody GRP1610

|                     |   |
|---------------------|---|
| Species/Host        | Rabbit  |
| Reactivity          | Mouse   |
| Conjugation         | Unconjugated  |
| Tested Applications | ELISA, WB   |
| Form/Appearance     | 0.02 M Potassium Phosphate, 0.15 M Sodium Chloride, pH 7.2  |
| Concentration       | 80 mg/mL  |
| Note                | For research use only.  |
| Isotype             | Antiserum   |
| Clonality           | Polyclonal  |
| Purity              | Morc3 antibody was prepared from monospecific antiserum by delipidation and defibrination. The antibody is specific for mouse Morc3 in expressed cell lysates. Cross reactivity to other Morc proteins has not been determined. |
| Source              | Morc3 whole rabbit serum was prepared by repeated immunizations with a mouse Morc3 recombinant protein.   |
| Uniprot ID          | <b>Q6A0C2</b>   |
| Entrez              | <a href="https://www.ncbi.nlm.nih.gov/gene//338467">https://www.ncbi.nlm.nih.gov/gene//338467</a>   |
| Dilution Range      | ELISA: 1:10,000-1:50,000, Western Blot: 1:1000-1:5000   |



Western Blot - Anti-Morc3