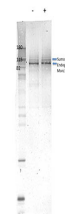


Product Datasheet

Morc3 (RABBIT) Antibody GRP1609

Species/Host	Rabbit
Reactivity	Mouse
Conjugation	Unconjugated
Tested Applications	ELISA, WB
Form/Appearance	0.02 M Potassium Phosphate, 0.15 M Sodium Chloride, pH 7.2
Concentration	80 mg/mL
Note	For research use only.
Isotype	Antiserum
Clonality	Polyclonal
Purity	Morc3 antibody was prepared from monospecific antiserum by delipidation and defibrination. The antibody is specific for mouse Morc3 in expressed cell lysates. Cross reactivity to other Morc proteins has not been determined.
Source	Morc3 whole rabbit serum was prepared by repeated immunizations with a mouse Morc3 recombinant protein.
Uniprot ID	Q6A0C2
Entrez	https://www.ncbi.nlm.nih.gov/gene//338467
Dilution Range	ELISA: 1:10,000-1:50,000, Western Blot: 1:1000-1:5000



Western Blot - Anti-Morc3