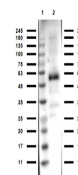


## Product Datasheet

### MONKEY IgG (H&L) (RABBIT) Antibody GRP5343

<b>Description</b>	Anti-MONKEY IgG (H&L) (RABBIT) Antibody
<b>Species/Host</b>	Rabbit
<b>Reactivity</b>	Monkey
<b>Conjugation</b>	Unconjugated
<b>Tested Applications</b>	ELISA, WB
<b>Form/Appearance</b>	0.02 M Potassium Phosphate, 0.15 M Sodium Chloride, pH 7.2
<b>Concentration</b>	1.0 mg/ml
<b>Note</b>	For research use only.
<b>Isotype</b>	IgG
<b>Clonality</b>	Polyclonal
<b>Purity</b>	This product was prepared from monospecific antiserum by immunoaffinity chromatography using Monkey IgG coupled to agarose beads. Assay by immunoelectrophoresis resulted in a single precipitin arc against anti-Rabbit Serum, Monkey IgG and Monkey Serum.
<b>Source</b>	Anti-Monkey IgG (H&L) was produced by repeated immunization with monkey IgG in rabbit.
<b>Dilution Range</b>	ELISA: 1:50,000 - 1:100,000, Western Blot: 1:10,000 - 1:60,000
<b>Application Notes</b>	Anti-Monkey IgG (H&L) is suitable for use in immunoelectrophoresis, western-blot, competitive western-blot, ELISA and competitive ELISA assays. Specific conditions for reactivity and signal detection should be optimized by the end user.



Western blot of  
Anti-Monkey  
IgG Antibody