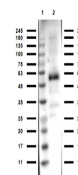


Product Datasheet

MONKEY IgG (H&L) (RABBIT) Antibody GRP5343

Description	Anti-MONKEY IgG (H&L) (RABBIT) Antibody
Species/Host	Rabbit
Reactivity	Monkey
Conjugation	Unconjugated
Tested Applications	ELISA, WB
Form/Appearance	0.02 M Potassium Phosphate, 0.15 M Sodium Chloride, pH 7.2
Concentration	1.0 mg/ml
Note	For research use only.
Isotype	IgG
Clonality	Polyclonal
Purity	This product was prepared from monospecific antiserum by immunoaffinity chromatography using Monkey IgG coupled to agarose beads. Assay by immunoelectrophoresis resulted in a single precipitin arc against anti-Rabbit Serum, Monkey IgG and Monkey Serum.
Source	Anti-Monkey IgG (H&L) was produced by repeated immunization with monkey IgG in rabbit.
Dilution Range	ELISA: 1:50,000 - 1:100,000, Western Blot: 1:10,000 - 1:60,000
Application Notes	Anti-Monkey IgG (H&L) is suitable for use in immunoelectrophoresis, western-blot, competitive western-blot, ELISA and competitive ELISA assays. Specific conditions for reactivity and signal detection should be optimized by the end user.



Western blot of
Anti-Monkey
IgG Antibody