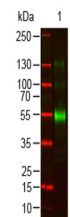


Product Datasheet

MONKEY IgG (gamma chain) (GOAT) Antibody GRP5321

Description	Anti-MONKEY IgG (gamma chain) (GOAT) Antibody
Species/Host	Goat
Reactivity	Monkey
Conjugation	Unconjugated
Tested Applications	ELISA, IHC-P, WB
Form/Appearance	0.02 M Potassium Phosphate, 0.15 M Sodium Chloride, pH 7.2
Concentration	1.0 mg/mL
Note	For research use only.
Isotype	IgG
Clonality	Polyclonal
Source	Anti-Monkey IgG (gamma chain) was produced by repeated immunization with monkey IgG gamma heavy chain in goat.
Dilution Range	ELISA: 1:75000 - 1:175,000, Immunochemistry: 1:1,000 - 1:5,000, Western Blot: 1:2,000 - 1:10,000
Application Notes	Anti-Monkey IgG (gamma chain) is suitable for use in immunoelectrophoresis, western-blot, competitive western-blot, ELISA and competitive ELISA assays. Specific conditions for reactivity and signal detection should be optimized by the end user.



Western Blot - Monkey IgG
gamma Antibody