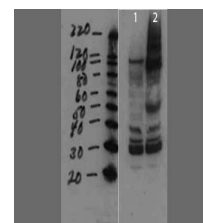


Product Datasheet

MMTV (RABBIT) Antibody GRP1617

Species/Host	Rabbit
Reactivity	Mouse
Conjugation	Unconjugated
Tested Applications	ELISA, WB
Form/Appearance	0.02 M Potassium Phosphate, 0.15 M Sodium Chloride, pH 7.2
Concentration	66 mg/mL
Note	For research use only.
Isotype	Antiserum
Clonality	Polyclonal
Source	MMTV was prepared from whole rabbit serum produced by repeated immunizations with a full length sequence for mouse mammary tumor virus surface protein tagged with His.
Uniprot ID	P03374
Dilution Range	ELISA: 1:10,000-1:20,000, Western Blot: 1:1000-1:2000



Western Blot - anti-MMTV