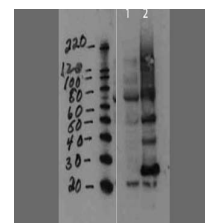


## Product Datasheet

### MMTV (RABBIT) Antibody GRP1616

|                            |  |
|----------------------------|--|
| <b>Species/Host</b>        | Rabbit   |
| <b>Reactivity</b>          | Mouse  |
| <b>Conjugation</b>         | Unconjugated   |
| <b>Tested Applications</b> | ELISA, WB  |
| <b>Form/Appearance</b>     | 0.02 M Potassium Phosphate, 0.15 M Sodium Chloride, pH 7.2   |
| <b>Concentration</b>       | 77mg/ml  |
| <b>Note</b>                | For research use only.   |
| <b>Isotype</b>             | Antiserum  |
| <b>Clonality</b>           | Polyclonal   |
| <b>Source</b>              | MMTV was prepared from whole rabbit serum produced by repeated immunizations with a full length sequence for mouse mammary tumor virus capsid protein tagged with His. |
| <b>Uniprot ID</b>          | <b>P11283</b>  |
| <b>Dilution Range</b>      | ELISA: 1:10,000-1:20,000, Western Blot: 1:1000-1:2000  |



MMTV capsid Western  
Blot