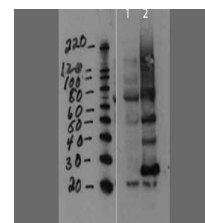


## Product Datasheet

### MMTV (RABBIT) Antibody GRP1615

<b>Species/Host</b>	Rabbit
<b>Reactivity</b>	Mouse
<b>Conjugation</b>	Unconjugated
<b>Tested Applications</b>	ELISA, WB
<b>Form/Appearance</b>	0.02 M Potassium Phosphate, 0.15 M Sodium Chloride, pH 7.2
<b>Concentration</b>	77mg/mL
<b>Note</b>	For research use only.
<b>Isotype</b>	Antiserum
<b>Clonality</b>	Polyclonal
<b>Source</b>	MMTV was prepared from whole rabbit serum produced by repeated immunizations with a full length sequence for mouse mammary tumor virus capsid protein tagged with His.
<b>Uniprot ID</b>	<b>P11283</b>
<b>Dilution Range</b>	ELISA: 1:10,000-1:20,000,Western Blot: 1:1000-1:2000



MMTV capsid Western  
Blot