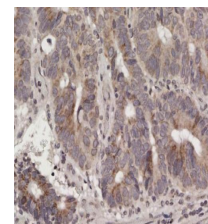


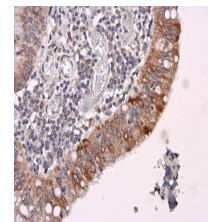
Product Datasheet

RAS (G12D Mutant) antibody GRP77

Description	RAS (G12D Mutant) antibody
Species/Host	Rabbit
Reactivity	Human
Conjugation	Unconjugated
Tested Applications	IHC-P, WB
Immunogen	Carrier-protein conjugated synthetic peptide encompassing a sequence within the N-terminus region of human Ras (G12D Mutant). The exact sequence is proprietary.
Form/Appearance	Liquid: 1XPBS, 1% BSA, 20% Glycerol (pH7). 0.025% ProClin 300 was added as a preservative.
Concentration	0.39 mg/ml
Storage	Store as concentrated solution. Centrifuge briefly prior to opening vial. For short-term storage (1-2 weeks), store at 4°C. For long-term storage, aliquot and store at -20°C or below. Avoid multiple freeze-thaw cycles.
Note	For research use only.
Isotype	IgG
Clonality	Polyclonal
Purity	Purified by antigen-affinity chromatography.
Dilution Range	WB: 1:500-1:10000, IHC-P: 1:100-1:1000



Ras (G12D Mutant) antibody detects Ras (G12D Mutant) protein in colon cancer by immunohistochemical analysis.
Sample: Paraffin-embedded colon cancer. Ras (G12D Mutant) antibody (GRP529) diluted at 1:1000.



Ras (G12D Mutant) antibody detects Ras (G12D Mutant) protein in colon cancer by immunohistochemical analysis.
Sample: Paraffin-embedded colon cancer. Ras (G12D Mutant) antibody (GRP529) diluted at 1:1000.