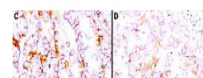


## Product Datasheet

### Mesothelin (MOUSE) Monoclonal Antibody GRP2090

<b>Description</b>	Anti-Mesothelin (MOUSE) Monoclonal Antibody
<b>Species/Host</b>	Mouse
<b>Reactivity</b>	Human
<b>Conjugation</b>	Unconjugated
<b>Tested Applications</b>	ELISA, IHC-P, WB
<b>Form/Appearance</b>	0.02 M Potassium Phosphate, 0.15 M Sodium Chloride, pH 7.2
<b>Concentration</b>	1.0 mg/mL
<b>Note</b>	For research use only.
<b>Isotype</b>	IgG2a
<b>Clonality</b>	Monoclonal
<b>Purity</b>	This antibody is directed against human mesothelin protein. This product was purified from tissue culture supernatant fluid by Protein A chromatography. Cross reactivity with homologues from other sources has not been tested.
<b>Source</b>	This antibody was produced in mesothelin-deficient mice by immunizations with plasmid cDNA encoding human MSLN full length protein followed by a single boost of a recombinant human mesothelin-Fc fusion protein.
<b>Clone ID</b>	MN-1
<b>Uniprot ID</b>	<a href="#">Q13421</a>
<b>Entrez</b>	<a href="https://www.ncbi.nlm.nih.gov/gene/10232">https://www.ncbi.nlm.nih.gov/gene/10232</a>
<b>Dilution Range</b>	ELISA: 1:10,000 - 1:50,000, Immunohistochemistry: 1:100, Western Blot: 1:1,000



Anti-Mesothelin Antibodies  
-  
Immunohistochemistry