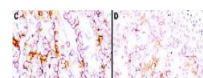


Product Datasheet

Mesothelin (MOUSE) Monoclonal Antibody GRP2088

Description	Anti-Mesothelin (MOUSE) Monoclonal Antibody
Species/Host	Mouse
Reactivity	Human
Conjugation	Unconjugated
Tested Applications	ELISA, IHC-P, WB
Form/Appearance	0.02 M Potassium Phosphate, 0.15 M Sodium Chloride, pH 7.2
Concentration	1.0 mg/mL
Note	For research use only.
Isotype	IgG2a
Clonality	Monoclonal
Purity	This antibody is directed against human mesothelin protein. This product was purified from tissue culture supernatant fluid by Protein A chromatography. Cross reactivity with homologues from other sources has not been tested.
Source	This antibody was produced in mesothelin-deficient mice by immunizations with plasmid cDNA encoding human MSLN full length protein followed by a single boost of a recombinant human mesothelin-Fc fusion protein.
Clone ID	MB-G10
Uniprot ID	Q13421
Entrez	https://www.ncbi.nlm.nih.gov/gene/10232
Dilution Range	ELISA: 1:10,000 - 1:50,000, Immunohistochemistry: 1:100, Western Blot: 1:1,000



Anti-Mesothelin Antibody -
Immunohistochemistry