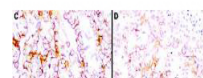


Product Datasheet

Mesothelin (MOUSE) Monoclonal Antibody GRP2087

| | |
|----------------------------|---|
| Description | Anti-Mesothelin (MOUSE) Monoclonal Antibody |
| Species/Host | Mouse |
| Reactivity | Human |
| Conjugation | Unconjugated |
| Tested Applications | ELISA, IHC-P, WB |
| Form/Appearance | 0.02 M Potassium Phosphate, 0.15 M Sodium Chloride, pH 7.2 |
| Concentration | 1.0 mg/mL |
| Note | For research use only. |
| Isotype | IgG2a |
| Clonality | Monoclonal |
| Purity | This antibody is directed against human mesothelin protein. This product was purified from tissue culture supernatant fluid by Protein A chromatography. Cross reactivity with homologues from other sources has not been tested. |
| Source | This antibody was produced in mesothelin-deficient mice by immunizations with plasmid cDNA encoding human MSLN full length protein followed by a single boost of a recombinant human mesothelin-Fc fusion protein. |
| Clone ID | MB-G10 |
| Uniprot ID | Q13421 |
| Entrez | https://www.ncbi.nlm.nih.gov/gene/10232 |
| Dilution Range | ELISA: 1:10,000 - 1:50,000, Immunohistochemistry: 1:100, Western Blot: 1:1,000 |



Anti-Mesothelin Antibody -
Immunohistochemistry