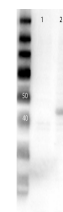


Product Datasheet

MEK2 (RABBIT) Antibody GRP3751

Description	Anti-MEK2 (RABBIT) Antibody
Species/Host	Rabbit
Reactivity	Human
Conjugation	Unconjugated
Tested Applications	ELISA, IHC-P, WB
Form/Appearance	0.02 M Potassium Phosphate, 0.15 M Sodium Chloride, pH 7.2
Concentration	1.09 mg/mL
Storage	Store vial at -20 °C prior to opening. This product is stable at 4 °C as an undiluted liquid. For extended storage, aliquot contents and freeze at -20 °C or below. Avoid cycles of freezing and thawing. Dilute only prior to immediate use.
Note	For research use only.
Isotype	IgG
Clonality	Polyclonal
Source	Anti-MEK2 Antibody was produced in rabbits by repeated immunizations with synthetic peptide corresponding to amino acid residues near the C-terminus human MEK2 protein conjugated to KLH.
Uniprot ID	P36507
Dilution Range	ELISA: 5.0 ug/mL, Immunochemistry: 1:100, Western Blot: 1.0 ug/mL
Application Notes	Anti-MEK 2 (RABBIT) antibody is suitable for use in ELISA, Western Blotting, and IHC. Specific conditions of reactivity should be optimized by the end user. Expect a band of approximately 44 kDa.



Western Blot of Anti-MEK2
C-term Antibody