

## Product Datasheet

# MEK2 (MOUSE) Monoclonal Antibody Fluorescein Conjugated GRP2210

**Description** Anti-MEK2 (MOUSE) Monoclonal Antibody Fluorescein Conjugated

**Species/Host** Mouse

**Reactivity** Human, Mouse, Rat

**Conjugation** FITC

**Tested Applications** ELISA, WB

**Form/Appearance** 0.02 M Potassium Phosphate, 0.15 M Sodium Chloride, pH 7.2

**Concentration** 1.0 mg/mL

**Note** For research use only.

**Isotype** IgG

**Clonality** Monoclonal

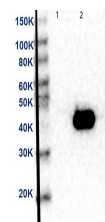
**Source** Anti-MEK2 Monoclonal Antibody was produced in mice by repeated immunizations with synthetic peptide corresponding to amino acid residues near the C-terminus conjugated to KLH.

**Clone ID** 12A6.G1.G11

**Uniprot ID** **P36507**

**Dilution Range** ELISA: 1:40,000, Fluorochrome: 3.5, Western Blot: 1 µg /mL

**Application Notes** Anti-MEK 2 FITC Conjugated (MOUSE) Antibody is suitable for use in Western Blotting and ELISA. Specific conditions of reactivity should be optimized by the end user. Expect a band of approximately 44 kDa.



Western Blot of MEK2 Antibody