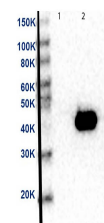


Product Datasheet

MEK2 (MOUSE) Monoclonal Antibody GRP2145

Description	Anti-MEK2 (MOUSE) Monoclonal Antibody
Species/Host	Mouse
Reactivity	Human, Mouse, Rat
Conjugation	Unconjugated
Tested Applications	ELISA, WB
Form/Appearance	0.02 M Potassium Phosphate, 0.15 M Sodium Chloride, pH 7.2
Concentration	1.00 mg/ml
Note	For research use only.
Isotype	IgG
Clonality	Monoclonal
Source	Anti-MEK2 Monoclonal Antibody was produced in mice by repeated immunizations with synthetic peptide corresponding to amino acid residues near the C-terminus conjugated to KLH.
Clone ID	12A6.G1.G11
Uniprot ID	P36507
Dilution Range	ELISA: 1:40,000, Western Blot: 1µg /mL
Application Notes	Anti-MEK 2 (MOUSE) antibody is suitable for use in ELISA and Western Blotting. Specific conditions of reactivity should be optimized by the end user. Expect a band of approximately 44 kDa.



Western Blot of MEK2
Antibody