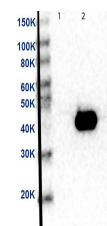


## Product Datasheet

### MEK2 (MOUSE) Monoclonal Antibody GRP2144

<b>Description</b>	Anti-MEK2 (MOUSE) Monoclonal Antibody
<b>Species/Host</b>	Mouse
<b>Reactivity</b>	Human, Mouse, Rat
<b>Conjugation</b>	Unconjugated
<b>Tested Applications</b>	ELISA, WB
<b>Form/Appearance</b>	0.02 M Potassium Phosphate, 0.15 M Sodium Chloride, pH 7.2
<b>Concentration</b>	1.00 mg/ml
<b>Storage</b>	Store vial at -20 °C prior to opening. This product is stable at 4 °C as an undiluted liquid. For extended storage, aliquot contents and freeze at -20 °C or below. Avoid cycles of freezing and thawing. Dilute only prior to immediate use.
<b>Note</b>	For research use only.
<b>Isotype</b>	IgG
<b>Clonality</b>	Monoclonal
<b>Source</b>	Anti-MEK2 Monoclonal Antibody was produced in mice by repeated immunizations with synthetic peptide corresponding to amino acid residues near the C-terminus conjugated to KLH.
<b>Clone ID</b>	12A6.G1.G11
<b>Uniprot ID</b>	<b>P36507</b>
<b>Dilution Range</b>	ELISA: 1:40,000, Western Blot: 1µg /mL
<b>Application Notes</b>	Anti-MEK 2 (MOUSE) antibody is suitable for use in Western Blotting. Specific conditions of reactivity should be optimized by the end user. Expect a band of approximately 44 kDa.



Western Blot of MEK2  
Antibody