

Product Datasheet

MEK1 pS222/MEK2 pS226 (MOUSE) Monoclonal Antibody GRP2159

Description Anti-MEK1 pS222/MEK2 pS226 (MOUSE) Monoclonal Antibody

Species/Host Mouse

Reactivity Human, Mouse, Rat

Conjugation Unconjugated

Tested Applications ELISA, WB

Form/Appearance 0.02 M Potassium Phosphate, 0.15 M Sodium Chloride, pH 7.2

Concentration 1.0 mg/mL

Note For research use only.

Isotype IgG

Clonality Monoclonal

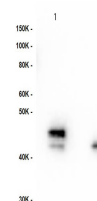
Source Anti-MEK1 pS222/MEK2 pS226 Monoclonal Antibody was produced in mice by repeated immunizations with synthetic peptide corresponding to amino acid residues surrounding the S222-226 phosphorylation site conjugated to KLH.

Clone ID 17C9.E1.H2.D7.H7.D5

Uniprot ID **Q02750**

Dilution Range ELISA: 1:40,000, Western Blot: 1 µg /mL

Application Notes Anti-MEK1 pS222/MEK2 pS226 (MOUSE) antibody is suitable for use in Western Blotting. Specific conditions of reactivity should be optimized by the end user. Expect a band of approximately 43.5 kDa.



Western Blot of MEK1
pS222
Antibody